

Rugrats™ in Paris—The Movie CD-ROM

USER'S MANUAL

© and © 2000 Mattel, Inc. El Segundo, CA 90245 U.S.A. All Rights Reserved. Mattel Interactive logo is a U.S. trademark of Mattel, Inc. Microsoft, Windows, and DirectX are either registered trademarks or trademarks of Microsoft Corporation in the U.S. and/or other countries. Pentium is a registered trademark of Intel Corporation.

Copyright (c) 1994-2000 by RAD Game Tools, Inc.

© and © 2000 PARAMOUNT PICTURES and VIACOM INTERNATIONAL INC. All Rights Reserved. Nickelodeon, Rugrats and all related titles, logos and characters are trademarks of Viacom International Inc. Rugrats created by ARLENE KLASKY, GABOR CSÜPO and PAUL GERMAIN.

© 2000 KnowWonder, Inc. All Rights Reserved. KnowWonder and the KnowWonder logo are registered trademarks of KnowWonder, Inc. in the United States and/or other countries. Rugrats in Paris—The Movie CD-ROM was designed and developed for Mattel, Inc. by KnowWonder, Inc., a Washington-based digital media company.

Uses Smacker Video Technology. © 1994-2000 by RAD Game Tools, Inc.

Contents

Babies in Paris!	1
Minimum System Requirements	2
Installation	3
Main Menu	5
Sign-In Screen	5
Saving Games	6
Navigating	7
Games	8
On-Screen Display	13
Characters	14
Credits	17
Mattel Interactive Customer Support	18
Mattel, Inc. License Agreement	19
Warranty	20

Babies in Paris!

Chuckie and the babies are in luck! Tommy's dad, Stu, is going to do some work at an amusement park called EUROREPTARLAND in Paris, France! Tommy gets to take some of his friends along for the trip. While Stu is working, the kids

get to take a special tour of the amusement park. They meet Kimi, whose mom works at the park. Kimi's an expert on the layout of the park, and is going to give the babies a guided tour.

EUROREPTARLAND is run by Coco LeBouche, who isn't as nice as someone who works in an amusement park should be. Coco doesn't watch where she's going and trips over Chuckie's favorite toy, Wawa. She grabs Wawa and gives it to her assistant to get rid of! The assistant takes off into the park with Wawa!

The babies promise to help Chuckie get Wawa back. Thank goodness Kimi is along, ready to help navigate the huge amusement park!



Minimum System Requirements

- Windows® 95/98
- Pentium® 166 MHz processor or better (Pentium® 233 MHz recommended)
- 16 MB of RAM (32 MB recommended)
- Quad speed (4x) CD-ROM drive (8x recommended)
- Video card capable of 16-bit graphics with a minimum of 2 MB of RAM
- 16-bit Windows®- and DirectX®-compatible sound card*
- Video card compatible with DirectX®*
- 100 MB available hard disk space

* If you experience problems with the installation or compatibility of DirectX® on your computer, please consult the hardware manufacturer of your video or sound card for the latest drivers compatible with DirectX®. Check the Microsoft® web site www.microsoft.com/directx for more information.



Installation

TO INSTALL

1. Begin at the Windows desktop.
2. Insert the CD-ROM into your CD-ROM drive. The *Rugrats™ in Paris–The Movie CD-ROM* startup window will appear.
3. Click the **Install** button and follow the on-screen instructions to install the program.

If the *Rugrats™ in Paris–The Movie CD-ROM* startup window does not appear automatically, you can install the program manually:

1. Click the **Start** button on the taskbar and choose **Run**.
2. Type **D:\SETUP.EXE** in the line labeled Open.
(If your CD-ROM drive uses a letter other than **D**, substitute that letter for **D**.)
3. Click the **OK** button and follow the on-screen instructions to install the program.



TO PLAY

After successfully installing the program, the startup window will usually appear each time the CD-ROM is inserted into the CD-ROM drive. Click the **Start** button at the startup window to begin the game.

If the *Rugrats™ in Paris–The Movie CD-ROM* startup window does not appear automatically:

1. Begin at the Windows desktop.
2. Click the **Start** button, point to **Programs**, point to **Nickelodeon**, point to **Rugrats™ in Paris–The Movie CD-ROM**, and then click **Rugrats™ in Paris–The Movie CD-ROM**. Don't forget to register your software when prompted.

TO REMOVE

If you need to remove **Rugrats™ in Paris–The Movie CD-ROM**, begin at the Windows desktop. Click the **Start** button, point to **Programs**, point to **Nickelodeon**, point to **Rugrats™ in Paris–The Movie CD-ROM** and then click **Uninstall Rugrats™ in Paris–The Movie CD-ROM**.



Main Menu

Choose **Play** to start playing *Rugrats™ in Paris—The Movie CD-ROM*. From the Main Menu, you can also see your high scores, view the game's credits, or exit the program. Once you select Play, you will go to the Sign-In screen.



Sign-In Screen

To begin *Rugrats™ in Paris—The Movie CD-ROM*, click on **New Player** and enter your name in the space at the top of the screen. If you've played before and you want to continue your game, select your name from the list and click on **Go**. To delete an old game, just click the name on the list and then click **Delete Player**.



Click the **back arrow** to go to the Main Menu to exit *Rugrats™ in Paris–The Movie CD-ROM*. When you quit the game, your levels completed in the games will be automatically saved. Next time you play, just select your name when you sign in to begin where you left off.

Saving Games

Your games are automatically saved when you exit *Rugrats™ in Paris–The Movie CD-ROM*. You can go back to your saved game and you'll still have all of your inventory items and will be in the same place in the adventure. All of the entrances you've opened will still be unlocked. Just continue your quest for Wawa.



Navigating

Use your **mouse** to move around. Move the **shoeprints cursor** where you want the babies to go, then **left-click**. The babies will walk to where you clicked. Use your mouse to **left-click** on items in the game. Your cursor will change to an exclamation point (!) whenever it is positioned over a clickpoint. If you see an **!**, **click** on that spot!



There's some secret information you need to learn if you're going to win the game. Fortunately (or not), Angelica has made her way into the control room! Go to the monitor consoles you'll see around the park to talk to Angelica. She won't give out important information unless you give her chocolate candy bonbons. You can collect the bonbons as you travel through EUROREPTARLAND. Collect all the candies you can, because Angelica can see everything from the control room and has lots of advice to give.



Games

When Chuckie and the babies find a game they need to play in order to get Chuckie's Wawa, a ticket will pop up at the beginning of the game. Click on the **ticket** to play.

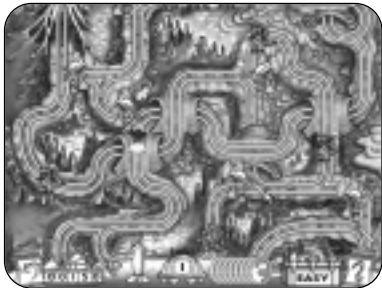
OOEY GOOEY WORLD

Help Kimi drive her car through ten levels of mazes. She must collect the elevator key hidden somewhere along the tracks and make it to the exit before getting slimed! As the car moves

through the maze, click on the **Gooley Mice** to switch to different tracks that will lead Kimi in another direction.

Use the **spacebar** to give Kimi's car a surge of speed. Kimi will get slimed if she runs into obstacles or traps. She can only take so much slime before she gets "slimed out" and has to start over

again. Go through a car wash to clean up the slime and empty the slime meter. Direct Kimi's car to collect all the bonus items you can, like the Reptar and Robosnail toys, to earn extra points.



Underground

Kimi has retrieved the elevator key in Ooey Gooey World. The babies can now explore the park underground for clues on finding Wawa. It's dark and scary but they can collect light sticks to see better. After the Rice Bowl ride, use the shovel Dil picks up to explore more of the park's underground.

Find the monitor consoles and get clues from Angelica. Take **ladders, cargo lifts, and elevators** to get back to the park.

RICE BOWL RIDE

Baby Dil's stuff is lost in the Rice Bowl ride. Grab Dil's stuff and make it to the exit before time runs out. Watch for the spinning rice bowls that move around and must be avoided. Use the **directional arrows** on the keyboard to maneuver Dil. Using **two keys** at one time, such as the **right arrow and down arrow**, will move Dil at an angle. Guide Dil past the bowls to pick up his belongings. If a rice bowl hits him, he'll drop his stuff. Pick up bonus items, like rattles, for big points! Watch for special items like the ice cube and the green clock to help you out.



CHUCKIE CHAN

Chuckie Chan, the well-known martial arts expert, is featured in this arcade game. Use the **left/right arrow keys** or hold down the left mouse button to move Chuckie across the screen. Whenever the ball comes near Chuckie, he'll punch it. Use the **spacebar** to launch the ball.

Maneuver Chuckie to hit the balls toward the wall of masks. Don't lose the ball, or you'll lose one chance.

Some of the masks are special bonus power-ups. Collect all the bonus items you can like the pinwheel and the rattle to earn extra points. Watch for the special bonus ice cream cone, too! Press the **spacebar** to have Chuckie kick the ball fast and earn more points when you hit items. Keep the ball in motion and hit all the masks until Chuckie earns his black belt!



NINJA CHASE

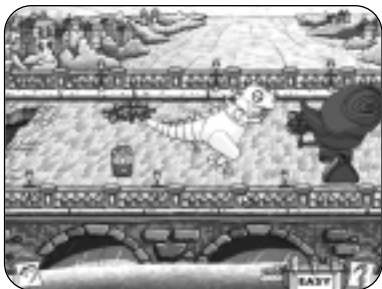
Tommy, the best climber of the group, is given the assignment of retrieving Angelica's Cynthia doll from the top of a volcano. He must get there before the Ninja security guards can grab him! Use the **arrow keys** to move Tommy and use the **spacebar** to help him jump over obstacles.

Use the **spacebar** in combination with the **left and right arrow keys** to do a running jump. If the Ninja guards catch Tommy, he'll lose one chance and have to start over. Grab all the bonus power-ups you can, like the bag of marbles! Collect bonus points by collecting flowers along the way. At the end of each level, a cargo lift will take Tommy higher for more climbing.



REPTAR VS. ROBOSNAIL

Play the Reptar versus Robosnail final showdown after completing four of the games. Control the star of EUROREPTARLAND, Reptar himself, in a robotic battle against his evil nemesis, Robosnail. You'll be fighting on a bridge over the river Seine in the heart of Paris. Push Robosnail off the bridge to win the game! Use the **arrow keys** to control Reptar and the **arrow keys** in combination with the **spacebar** to push Robosnail away. Use the **spacebar** by itself to do a defensive move to avoid a shove from Robosnail. Don't let Robosnail push Reptar into the river, or the game ends. There are bonus power-ups along the bridge that'll help both robot monsters, so watch for the lightning bolts and batteries.



On-Screen Display

INVENTORY ITEMS



The items in your inventory will appear in your backpack until you use them. Pick up items you see along the way, like bonbons or light rods. The bonbons will be needed to buy information from Angelica, who's in the park's control room. The light rods are needed to see in the darkness of the underground park.

HELP & HINTS



Click on the **Question Mark** to get help and hints on *Rugrats™ in Paris—The Movie CD-ROM*. When you click the **Help Button**, Kimi will offer tips and tricks for the section of the game you're in. If Kimi has more than one tip for you, click the **Arrow Button** to get another tip. Click **OK** when you're done.



You can also get help from Angelica, who's in the control room. Go to the monitor consoles with bonbons ready to give and Angelica will give you help and hints in return!

BACK ARROW



Click the **Back Arrow** to go back to the beginning or exit the game.



DIFFICULTY LEVEL

Click on the **Difficulty Icon** to change the level of difficulty of the game you're currently playing. If you're in the middle of a game and it's too hard, change the difficulty level to an easier setting and you'll restart that game with the new difficulty level.

Characters



CHUCKIE

Chuckie's the star of the game! Help him get his Wawa back. A mean lady named Coco stole it.



TOMMY

Without Tommy, the kids wouldn't even be on this adventure in Paris. Tommy's dad is working at EUROREPTARLAND, fixing the giant Reptar.



DIL

Dil's following behind in his jumpy seat, as usual.



PHIL AND LIL

Phil and Lil are on the trip, too, jumping in to take part in all the 'citing adventures.



KIMI

Kimi's mom works at EUROREPTARLAND, so Kimi knows all the ins and outs of the park. Kimi is the one who'll give you hints when you click the Help icon.



ANGELICA

Angelica somehow made her way to the EUROREPTARLAND control room. Give her bonbons because she's got the power to give you clues!



COCO LeBOUCHE

The evil head of EUROREPTARLAND, Coco treats her employees badly, hates children, and likes Chuckie even less because she tripped over his Wawa.



JEAN-CLAUDE

Coco's slimy henchman and toady, Jean-Claude doesn't like kids either. He does whatever Coco tells him to do.



REPTAR

Meet the terrifyingly huge yet tenderhearted star of EUROREPTARLAND. He may look scary, but he's really the babies' best friend!



ROBOSNAIL

Reptar's historical nemesis is Robosnail, the colossal robotic snail of EUROREPTARLAND. He's ready to battle Reptar to the finish!

Credits

MATTEL INTERACTIVE

SENIOR PRODUCER
Susan G. McBride

CO-PRODUCER
Nancy Nilsen

ASSOCIATE PRODUCER
Carol Nass

VP, PRODUCT DEVELOPMENT
Jeff Goodwin

GM, ENTERTAINMENT DIVISION
Amy Boylan

WRITER
Scott Gray

VOICE TALENT

<i>Cheryl Chase</i>	Angelica
<i>EG Daily</i>	Tommy
<i>Christine Cavanaugh</i>	Chuckie
<i>Kath Soucie</i>	Phil
<i>Kath Soucie</i>	Lil
<i>Tara Charendoff</i>	Dil
<i>Dionne Quan</i>	Kimi
<i>Keythe Farley</i>	Jean Claude
<i>Katherine Miovius</i>	Coco

VOICEOVER DIRECTOR
Keythe Farley

QA TECHNICAL LEAD
Robert Bryant

QA TEST TEAM
Nicholas Layne,
Andrew Lieu,
Fausto Lorenzani,
Peter Reinhard

DIRECTOR OF QUALITY ASSURANCE
Ray Boylan

DIRECTOR OF MARKETING
Lauren Berzins

PRODUCT MANAGER
Shaun Rowan

ASSOCIATE PRODUCT MANAGER
Melanie Bullock

VICE PRESIDENT, SALES
Sue Hughes

CORPORATE PRODUCT INTEGRITY
Kenny Bender

SM, BUSINESS & LEGAL AFFAIRS
Cynthia Berry Meyer

SPECIAL THANKS

April Wright, Brad Marshall,
Karen Kelly, Horta Editorial and
Sound, Inc. – Burbank, CA, Brad Brock,
Chris Thompson, Frank Lopez,
Bob Ladouceur, Elizabeth Lilley,
Leslee Pitschke, Michelle Dube,
Ginger Martinez, Katie Lonker,
Grant Creeger, Paige Brown,
Debbie Caton, Clara Castro,
Marie Whallon, Hammagami & Carroll
Associates, James Balthaser,
Nancy Duarte, Adrian Fernandez,
Craig Forrest, Roger Hu, Tracey Smith,
Danny Kwan, Don DeLucia, Tuan Trinh,
Sandeep Reddy, Belinda M. Van Sickle,
Ignited Minds LLC, Julie Takata,
Oany Ravelo, Toni DeBerry and
Sammy the Wonder Beagle

NICKELODEON INTERACTIVE

**VICE PRESIDENT OF INTERACTIVE
PRODUCTS AND BOOK PUBLISHING**
Steve Youngwood

**SENIOR MANAGER OF DEVELOPMENT
AND PRODUCTION**
Aly Peduto

PROJECT COORDINATOR
Erika "E" Ortiz

SPECIAL THANKS
Leigh Anne Brodsky, Russell Hicks,
Deborah Bart, Richard Betz,
Giuseppe Bianco, Tim Blankley,
Kate O'Brien, Sergio Cuan,
George Lentino, Jennifer Levine,
Paul McMahon, Joe Sandbrook,
Geoff Todebush, Jennifer Valentini

KNOWWONDER DIGITAL MEDIWORKS

EXECUTIVE PRODUCERS
Dan Elenbaas, David Mann

PRODUCER

Kristin McCarthy Hoefs

CREATIVE DIRECTOR
Phil Trumbo

DIRECTOR OF DESIGN
Kris Summers

VICE PRESIDENT OF DEVELOPMENT
Steve Ettinger

DIRECTOR OF DEV. AND TESTING
Jack Brummet

LEAD PROGRAMMER
Tom Powers

DEVELOPERS

Brian Elston,
Champage Mac,
Scott Miller,
Frank van der Salm,
James Walley, Janet Weddle

LEAD ARTIST
Randy Polliard

ART AND ANIMATION
Keith Himebaugh,

Todd Lovering, Bill Meyer, Jason
Newkirk, Tony Ravo, Jason
Southwick,
David Stevenson, Jeff Willis,
Todd P. Emerson

ART PRODUCTION COORDINATOR
Aspen Price

SOUND DESIGN
Mark Yeend, Drew Cady

MUSIC
Mark Yeend, Jeremy Soule

LEAD TESTER
Cara Diehm

SOFTWARE TESTERS
Kelly Brown,
Elizabeth Cummins,
Lars Grevstad, Cheryl Penick,
Jeremy Tinkey, Paul Weddle

SPECIAL THANKS
Greg Canote, Mike Dean, Steve Miles,
Susan DeMerit, Stephanie Hertager,
Liz Lehman, Gautama Payment



Mattel Interactive Customer Support

For answers to common questions, check the Technical Support link on Mattel's Consumer Relations Web page at <http://service.mattel.com>. If you don't find your answer there, use the **Contact Us** link to send an e-mail. If you wish, you can also contact us by phone. Our technical support specialists can be reached at the numbers listed below:

In the US, call **1-888-MATTEL9** (1-888-628-8359)

In Canada, call **1-888-MEDIA11** (1-888-633-4211)

In Australia, call **1-902-262-513** (Long distance toll charges may apply)

In UK, call **(0171) 519-5049** (Long distance toll charges may apply)

Comments or questions can also be mailed to:

Mattel Consumer Relations

Tech Support GA 0109

333 Continental Blvd.

El Segundo, CA 90245

USA

For information about more great family software, visit

www.mattelinteractive.com.

Mattel Canada, Inc., Mississauga, Ontario L5R 3W2

Mattel Australia Pty. Ltd., Richmond, Victoria 3121

Mattel Interactive U.K., PO Box 121, Crawley, RH11 9YP, England

Tel: 08707416821; Fax: 08707416822.

All calls charged at Standard National Rate and may be monitored/recorded for quality reasons.

www.mattelinteractive.co.uk; uktechsupport@learningco.com.



MATTEL, INC. CD-ROM END USER LICENSE AGREEMENT

PLEASE READ THIS AGREEMENT CAREFULLY BEFORE USING THE PROGRAM. BY USING THE PROGRAM, YOU AGREE TO ABIDE BY THESE TERMS AND APPLICABLE COPYRIGHT LAWS. IF YOU DO NOT AGREE, PLEASE PROMPTLY RETURN THE PROGRAM FOR A FULL REFUND OF THE AMOUNT YOU PAID.

As between You and Mattel, Inc. or its subsidiaries or affiliates ("Mattel"), the Program is owned by Mattel, and is licensed to You, not sold.

The term "Program" means the original program and all whole or partial copies of it, including portions merged into other programs. The Program is copyrighted and includes executable code and audio/visual content (AV Content). The term "AV Content" means any image, text, recording, picture or other audio and/or visual work.

1. License. Mattel grants You a nonexclusive license for the Program.

A. Under this license You may:

1. use the Program on only one machine at any one time;
2. make one copy of the Program for backup purposes only; and
3. transfer all of Your license rights in the Program to another party if and only if (a) You transfer this License Agreement and all other documentation provided with the Program, and the complete unaltered Program to the other party, (b) You destroy all copies of the Program in your possession, and (c) the other party reads and agrees to be bound by the terms of this License Agreement. It is your responsibility to ensure that all of these conditions are met. The rights licensed to You under this License Agreement are then terminated with respect to You and transferred to the other party, who, in order to be a valid user of the Program is then subject to all of the terms and conditions of this License Agreement.

B. You must reproduce the copyright notice(s) and any other notice of ownership on each copy or partial copy of the Program.

C. You may not:

1. use, copy, or transfer the Program (including any AV Content) except as provided in this License Agreement;
2. modify or adapt any AV Content without the express written consent of Mattel or as permitted by law;
3. reverse assemble, reverse compile or otherwise reverse engineer or translate the Program or attempt to derive source code from the object code version of the Program (except as allowed by mandatory provisions, if any, of the jurisdiction in which You obtained this License);
4. sublicense, rent, or lease the Program;
5. remove any proprietary notices or labels in the Program;
6. sell any items made using this Program or use the Program as part of a service bureau;
7. use this Program on any network or download, upload or exhibit the Program via the Internet/World Wide Web/WebTV/satellite or any similar technology; or
8. use this Program in a country other than the country in which it was purchased.

2. General. Your license will terminate automatically (which means that all rights licensed to You under this License Agreement terminate) without notice from Mattel if You fail to comply with the terms of this License Agreement. In such event, You must destroy or disable all Your copies of the Program. You agree to comply with all applicable import and export laws and regulations. This License Agreement shall be governed by, and construed in accordance with, the laws of the State of California without giving effect to any principles of conflicts of law. The provisions of this License Agreement are severable; if any provision is held to be invalid or unenforceable, it shall not affect the validity or enforceability of any other provision. The parties expressly exclude the application of the United Nations Convention on Contracts for the International Sale of Goods, as amended, replaced or reenacted from time to time.



MATTEL, INC. 90 DAY LIMITED WARRANTY

Mattel, Inc. warrants to "You" (the original consumer purchaser) that, under normal use, the "Product" (including the peripheral, the software program and the CD-ROM disk on which the software program is recorded) will be free from defects in material and workmanship for ninety (90) days from the date of purchase (Your receipt shall be evidence of the date of purchase). This Limited Warranty does not cover damage resulting from accident, misuse, unauthorized modification, or other conduct or conditions outside the control of Mattel, Inc. or its subsidiaries or affiliates (collectively, "Mattel"). If defective, return all contents of this package (including but not limited to the CD-ROM disk, user guide, and all other components of this package), postage prepaid, along with proof of the date-of-purchase, within the ninety (90) day warranty period, for replacement or refund at Mattel's election, to Consumer Adjustment Center, 15930 E. Valley Boulevard, City of Industry, California 91744. Immediately upon Your receipt of any refund, Your license to use the Product (including the software program) is terminated. THE FOREGOING LIMITED WARRANTY IS THE SOLE WARRANTY PROVIDED IN CONNECTION WITH THE PRODUCT AND IS IN LIEU OF ALL OTHER WARRANTIES, EXPRESS OR IMPLIED, INCLUDING BUT NOT LIMITED TO THE IMPLIED WARRANTIES OF MERCHANTABILITY AND FITNESS FOR A PARTICULAR PURPOSE, ALL OF WHICH IMPLIED WARRANTIES ARE EXPRESSLY DISCLAIMED. NO ORAL OR WRITTEN INFORMATION OR ADVICE GIVEN BY MATTEL OR ITS SUPPLIERS, DEALERS, DISTRIBUTORS, AGENTS, CONTRACTORS OR EMPLOYEES SHALL CREATE A WARRANTY OR IN ANY WAY INCREASE THE SCOPE OF THIS LIMITED WARRANTY. This Limited Warranty gives You specific legal rights; You may have other rights which vary from state to state. Some states do not allow the exclusion of incidental or consequential damages, or the limitation on how long an implied warranty lasts, so some of the above exclusions or limitations may not apply to You. In that event, or in the event that federal law restrictions apply, such warranties are limited in duration to a period of ninety (90) days from the date of delivery of the Product to the original end user. No warranties apply after that period.

IN NO EVENT SHALL MATTEL'S LIABILITY FOR ANY DAMAGES TO YOU OR ANY OTHER PERSON EXCEED THE PRICE PAID FOR THE PRODUCT, REGARDLESS OF ANY FORM OF THE CLAIM (INCLUDING BUT NOT LIMITED TO BREACH OF CONTRACT, PRODUCT LIABILITY OR NEGLIGENCE).

MATTEL AND ITS SUPPLIERS, DEALERS, DISTRIBUTORS, AGENTS, CONTRACTORS AND EMPLOYEES (COLLECTIVELY, THE "MATTEL GROUP") WILL NOT BE LIABLE FOR ANY LOST DATA, INCIDENTAL, SPECIAL, PUNITIVE OR INDIRECT DAMAGES OR OTHER CONSEQUENTIAL DAMAGES, EVEN IF MATTEL OR ANY OF THE MATTEL GROUP HAVE BEEN ADVISED OF THE POSSIBILITY OF SUCH DAMAGES. SOME JURISDICTIONS DO NOT ALLOW THE EXCLUSION OR LIMITATION OF INCIDENTAL OR CONSEQUENTIAL DAMAGES, SO THE ABOVE LIMITATION OR EXCLUSION MAY NOT APPLY TO YOU.

For inquiries regarding the Product, please contact Mattel, Inc. at 333 Continental Boulevard, El Segundo, California 90245.

VALID ONLY IN U.S.A.



26351-0921