

# Kristi

YAMAGUCHI

*Fantasy Ice Skating*



*Kristi Yamaguchi*

WIZARD *Works*



\*\*\*\*\*

# KRISTI YAMAGUCHI FANTASY ICE SKATING®

\*\*\*\*\*

Introduction.....	3
System Requirements.....	4
Installing and Running Instructions.....	5
Getting Started.....	7
DRESS UP.....	11
OUTFIT BUTTONS.....	12
SAVING, LOADING, AND PRINTING OUTFITS.....	13
Designing a Routine.....	15
New Routine.....	16
Saved Routine.....	17
Music.....	18
Settings.....	19
Moves.....	20
Troubleshooting.....	25
Technical Support.....	26

# Introduction

\*\*\*\*\*

Congratulations, you can now create your own ice skating routines! With Kristi Yamaguchi's Fantasy Ice Skating it's very easy to choreograph your very own routines, complete with music, in your choice of settings. You will also be able to dress Kristi in many different outfits and print them out to show your friends and family.

You can design an outfit for Kristi choosing from many different tops, skates and other accessories. With all of the clothing you can put together hundreds of different outfits with a click of your mouse. When you are finished with your outfit you can save and print it out.

Designing a routine is simple and fun. Once you have picked out the music, chosen Kristi's moves and picked a location, you can watch her perform her routine instantly! Please read through this manual carefully to learn all of the exciting features available before you get started.

Follow the simple instructions on page 5 of this manual to install Kristi Yamaguchi's Fantasy Ice Skating. You'll be watching Kristi perform some of her famous moves in no time.

# System Requirements

\*\*\*\*\*

In order to play Kristi Yamaguchi's Fantasy Ice Skating your computer must meet the following hardware and software requirements. The minimum system requirements are:

- Pentium 75MHz or 100% compatible PC or faster processor
- Windows© 95
- Quadruple speed CD-ROM drive (4X or greater)
- 16MB RAM
- 50MB hard drive space
- Mouse
- 16 Bit color video card (PCI or VSA)
- 16 Bit sound card
- Direct X compatible sound and video cards
- Windows 95 compatible inkjet or laser printer

# Installing and Running Instructions

\*\*\*\*\*

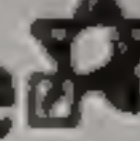
Insert the **Kristi Yamaguchi Fantasy Ice Skating** CD-ROM disc into your CD-ROM drive.

- ① Click **Start** on the Windows 95 task bar and choose **Run...**
- ② Type **D:\setup.exe** (where D is your CD-ROM drive) and click on **OK**.
- ③ Follow the on screen instructions.
- ④ After the game components are installed, you will be asked to install the latest version of DirectX. It is highly recommended that you choose **Yes** at any of the on screen prompts (even if it recommends you choose **No**).
- ⑤ After installation is complete, you may be asked to restart your machine. Choose **Yes**.

You will find a **Kristi Yamaguchi Fantasy Ice Skating** icon on your desktop, and within **Programs** under the **Start Menu** on the Windows 95 task bar.

**Note:** You must have the **Kristi Yamaguchi Fantasy Ice Skating** CD in your CD-ROM drive to play.

## Installing and Running Instructions (Continued)

\*\*\*\*\*  
You can begin playing Kristi Yamaguchi Fantasy Ice Skating by first placing the CD-ROM in the drive and either selecting the  icon or by selecting **Start, Programs, Kristi Yamaguchi Fantasy Ice Skating** and the **Kristi Yamaguchi Fantasy Ice Skating** program icon.



Please read through the rest of this manual carefully to learn all of the exciting features available before you get started.

**Note:** Kristi Yamaguchi Fantasy Ice Skating recommends but does not require a 640 X 480 screen resolution.

To uninstall Kristi Yamaguchi Fantasy Ice Skating, select **Start, Programs, Kristi Yamaguchi Fantasy Ice Skating** and the **Uninstall Kristi Yamaguchi Fantasy Ice Skating** icon. Follow the on screen instructions to complete the uninstall.

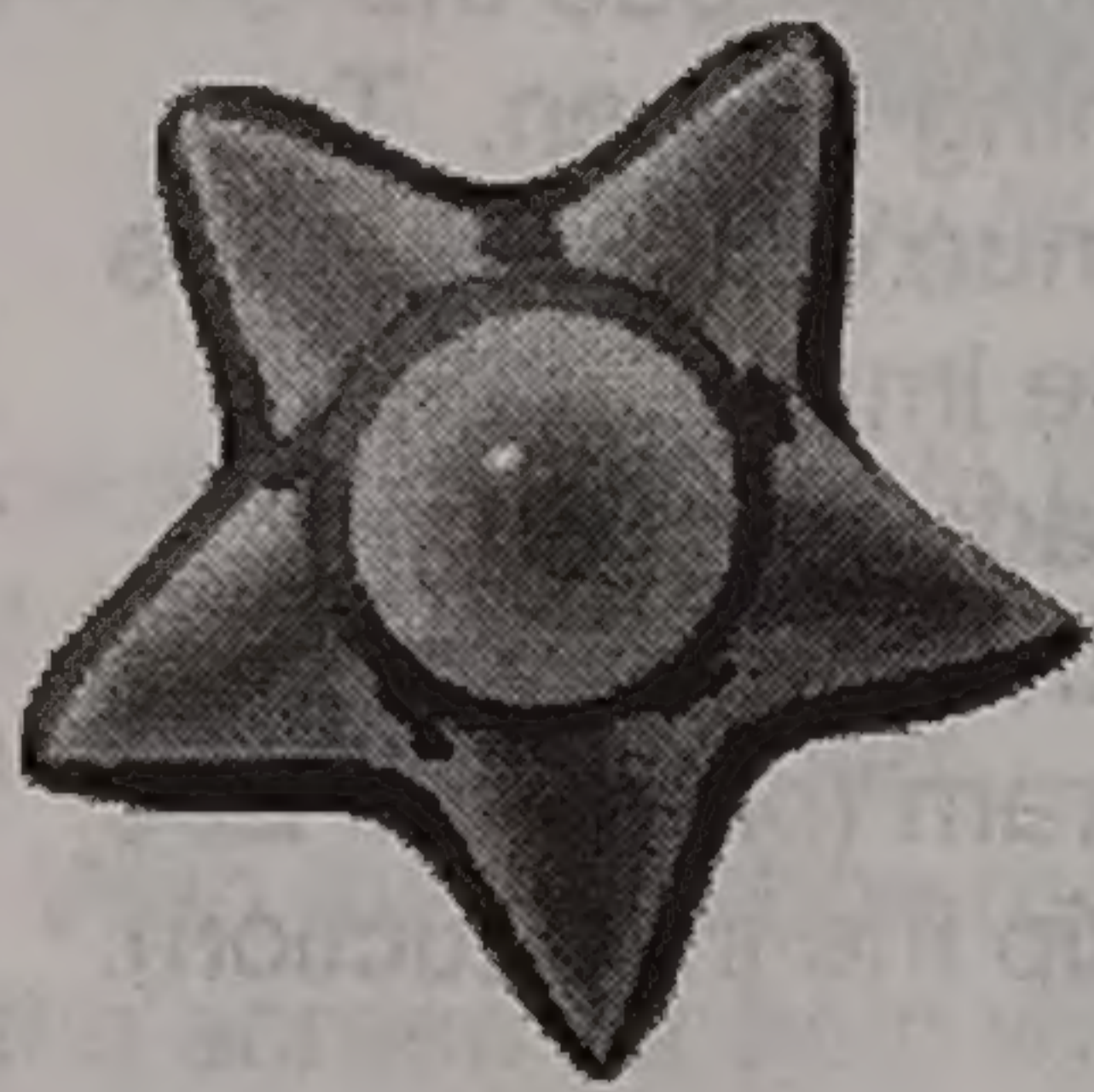
Note: You must have the Kristi Yamaguchi Fantasy Ice Skating CD in your CD-ROM drive to play.

# Getting Started

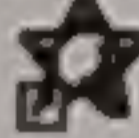
\*\*\*\*\*

This section contains information to help you get started using Kristi Yamaguchi Fantasy Ice Skating. When you are finished with this section you should be able to:

- ① Start Kristi Yamaguchi Fantasy Ice Skating
- ② Navigate with the basic buttons and options
- ③ Select **Dress Up, Design Routine** or **Video** options
- ④ Exit the program



## ***Starting Kristi Yamaguchi Fantasy Ice Skating***

In order to start Kristi Yamaguchi Fantasy Ice Skating you must install the program first, refer to the **Installing and Running Instructions** on page 5. Each time you want to use Kristi Yamaguchi Fantasy Ice Skating you will have to place the CD-ROM in the CD-ROM drive before you start the program. You can start the program by double-clicking on the  icon found on your Windows 95 desktop, or select **Start, Programs, Kristi Yamaguchi Fantasy Ice Skating** and the **Kristi Yamaguchi Fantasy Ice Skating** program icon.

When you start Kristi Yamaguchi Fantasy Ice Skating you may notice a message about the screen resolution. Follow the on screen directions and click **OK** to continue.

You should see the Opening Screen. To continue click anywhere on the image. Kristi Yamaguchi will then introduce you to the program (press the **Esc** to skip the introduction).

After the introduction you should then see the Main Menu screen.



*Opening Screen*

## Navigating with the Basic Buttons and Options

You can move to the previous menu in Kristi Yamaguchi Fantasy Ice Skating by simply clicking on the Menu Button Icon found in the upper right hand corner of the screen.



*Menu Button*



*Help Button*

Help is available by simply clicking on the Help Button found on the lower left hand corner of the screen.

When you click on the Help Button the pointer becomes a question mark. With the question mark you can click anywhere on the screen for help with a particular area. To exit help simply click on the Help Button again.

You can exit Kristi Yamaguchi Fantasy Ice Skating by clicking on the Quit Button from the Main Menu (see below).



*Quit Button*

## Selecting Dress Up, Design Routine or Video options

After the introduction you should see the Main Menu. The Main Menu screen allows you to select Dress Up, Design Routine, or the

Video option. To choose an option click on the picture or words and the program will bring up the appropriate screen.

For further information see the **Dress Up** and **Design Routine** sections of this manual.



*Main Menu*

Selecting the **Video** option will show you video footage of the making of Kristi Yamaguchi Fantasy Ice Skating.

### Exit the Program

You can exit Kristi Yamaguchi Fantasy Ice Skating by clicking on the Quit Button found on the Main Menu screen (see above).



*Quit Button*

# Dress Up

\*\*\*\*\*  
Once you click on the Dress Up icon the Dress Up Screen will appear, displaying a full view of Kristi on the right side of the screen. Along the left edge of the screen are the six (6) Outfit item buttons. They are, from top to bottom: Hats, Tops, Bottoms, Gloves, Skates, and Accessories. When one of these Outfit item buttons are clicked on, the contents will be displayed on the left side of the screen.

To dress up Kristi, click on the desired item and then move it to the right side of the screen, click on the appropriate part of Kristi's body, and Kristi will now be wearing that item. You can change each item as often as you like.

Along the right edge of the screen are the New Outfit, Save Outfit, and Load Outfit and Print Outfit buttons.



*Dress Up Screen*

# Dress Up – Outfit Buttons

\*\*\*\*\*

These are the Outfit Buttons found on the left-hand side of the Dress Up Screen. Each button offers a different item for you to place on Kristi.



This is the Hats Button, there are seven hats that you can place on Kristi.



This is the Tops Button, you can place one of nine tops on Kristi.



Here is the Bottoms Button, with this button pressed you will have nine items to choose from.



Pressing the Gloves Button will show nine pairs of gloves to choose from.



With the Skates Button pressed you can choose from nine skates to place on Kristi.



This is the Accessories Button. There are fifteen accessories to place on Kristi.

# Dress Up – Saving, Loading and Printing Outfits

\*\*\*\*\*

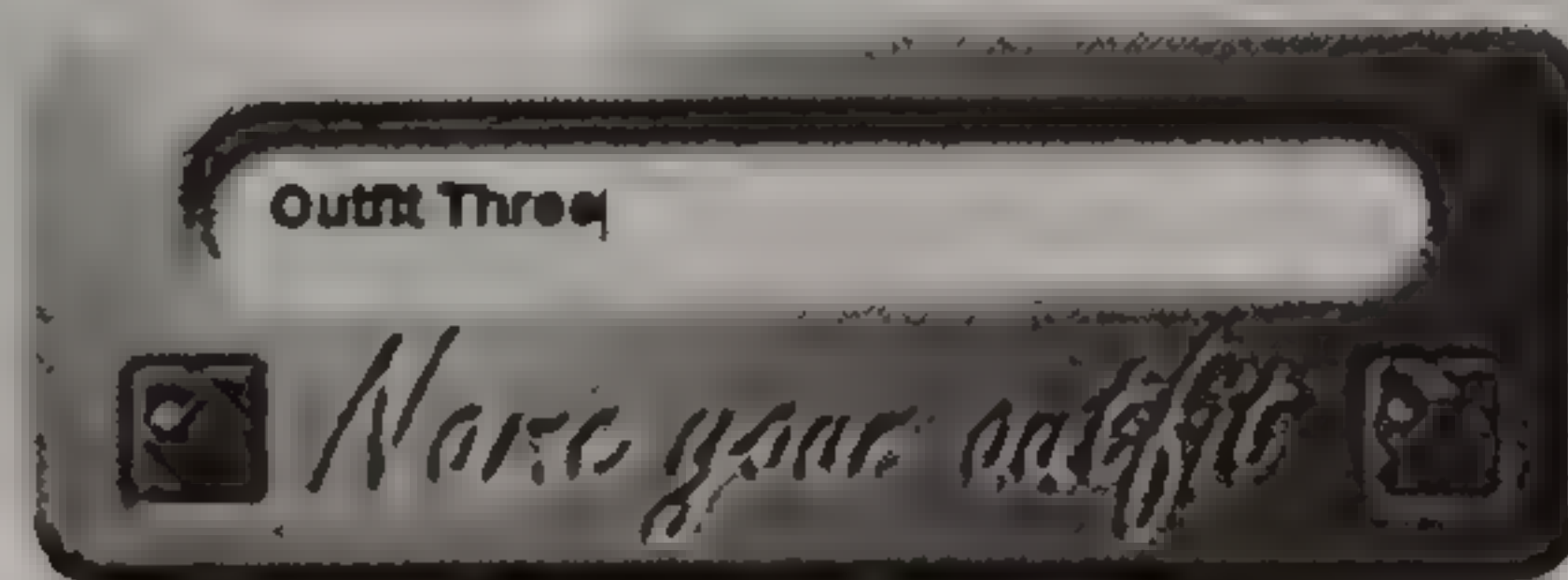
You can save, load or print any outfit that you create for Kristi. The buttons along the right side of the screen allow you to start a new outfit, save the current outfit, load a saved outfit or print the currently displayed outfit.

When you click on the **New Button** you clear the current outfit from memory and start with a blank Dress Up Screen.

Click on the **Save Button** to save the current outfit. Type the name of the outfit in the Name Your Outfit box and click on the **Disk Button** to save the outfit (see the Name Your Outfit illustration below) or the **Crossed Out Disk Button** to exit.

The **Load Button** shows you the Closet Screen and all of the outfits in Kristi's closet. Click on the check mark to load the selected outfit. See next page for more information on loading outfits.

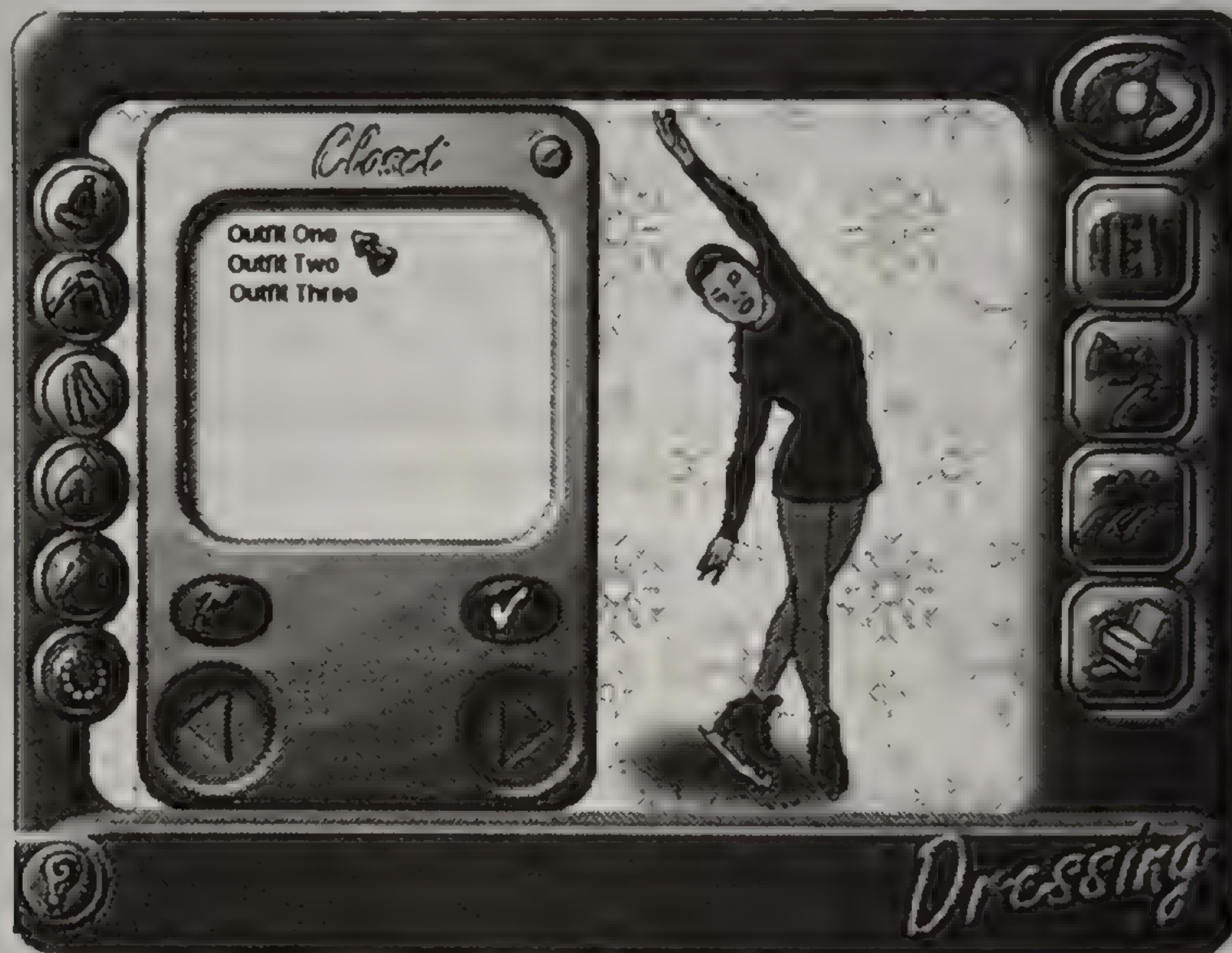
Click on the **Print Button** to print the outfit currently displayed on the Dress Up Screen. Make sure the printer is on and you have enough paper loaded before you click on the Print Button.



*Name Your Outfit*

# Dress Up –Loading Outfits

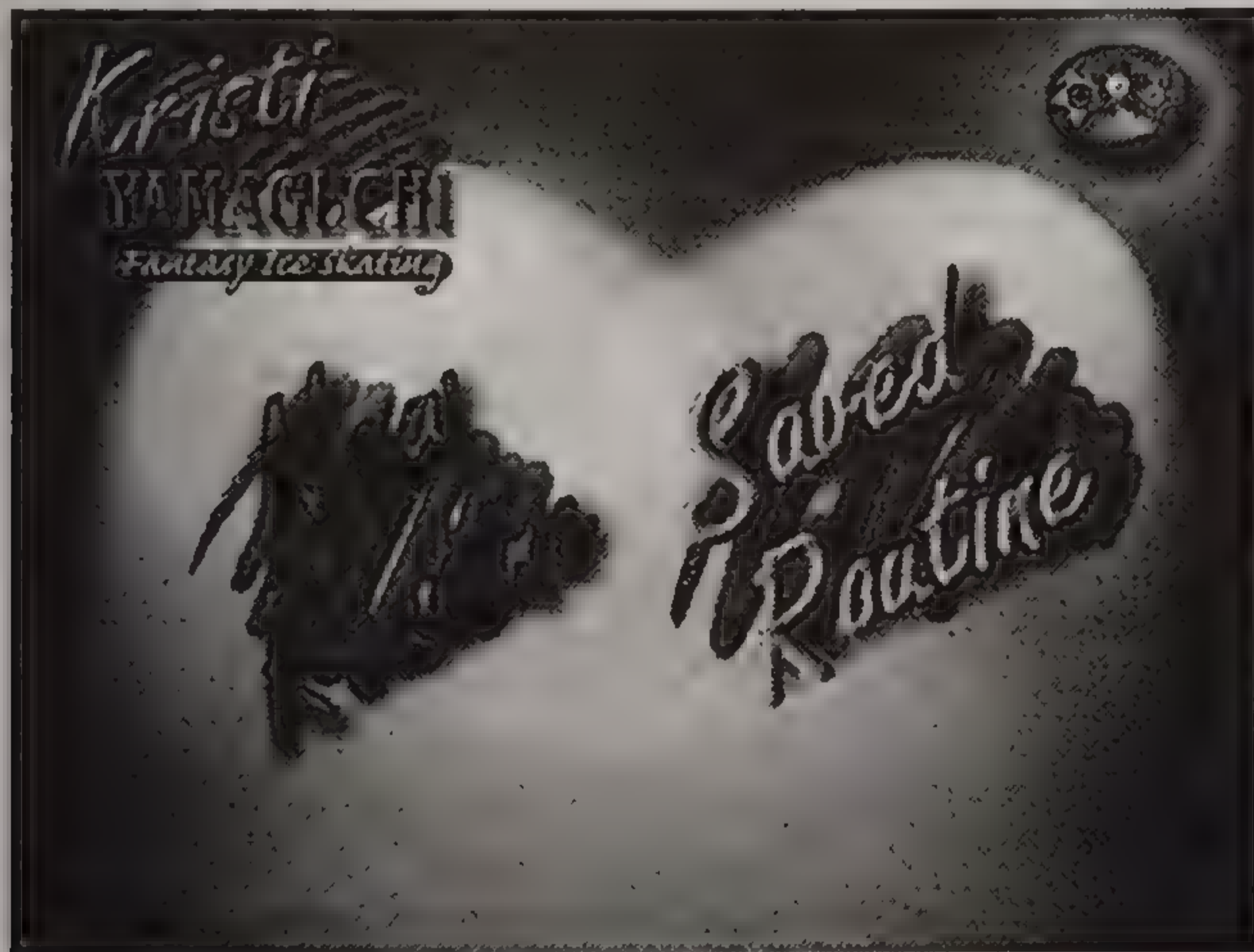
\*\*\*\*\*  
The Load button displays the Closet Screen. If you have saved more outfits than can be displayed on one screen you can click on the arrow keys to show them. When you click on a saved outfit in the closet it will be displayed on the Dress Up Screen to the right. Click on the **Check Mark Button** to select that outfit. To erase an outfit from the closet, click on the **Eraser Button** on the left of the Closet.



Closet Screen

# Designing a Routine

\*\*\*\*\*  
After selecting the Design A Routine icon from the Main Menu you will see the New and Saved Routine Screen. If you want to create a whole new routine, then select **New Routine**. If you want to load a routine that you have started already, select **Saved Routine**.



*New and Saved Routine Screen*

# Designing a Routine – Saved Routine

\*\*\*\*\*  
Selecting Saved Routine will bring up the Saved Routine Menu. A listing of up to ten saved routines will be displayed along the left side of the screen. To continue with a saved routine, click on the name of the routine on the left side of the screen and a picture of Kristi from that routine will appear on the right side of the screen. To load that routine, click on the **Disk Button** along the right side of the screen. To erase that routine from your hard drive, click on the **Eraser Button** along the right edge of the screen. If there are more than ten routines saved, click on the left and right arrow buttons along the bottom of the list window to scroll through more selections.



*Saved Routine Menu*

# Designing a Routine – New Routine


\*\*\*\*\*

Selecting **New Routine** brings up the New Routine Menu, where you can begin to create your new routine. The New Routine Menu allows you to select the music, moves and setting for Kristi's performance.



*New Routine Menu*

# Designing a Routine – Music

\*\*\*\*\*  
Selecting Music will take you to the Music Selection Screen where you can listen and select the music for your routine. There are ten different musical selections to choose from. To choose your music click on any of the number buttons to the right of the CD Player, clicking on another number while the music is playing will change the song to the new selection. Once you have selected your music, click on the Menu Button  in the upper right hand corner of the screen.



*Music Selection Screen*

# Designing a Routine – Settings

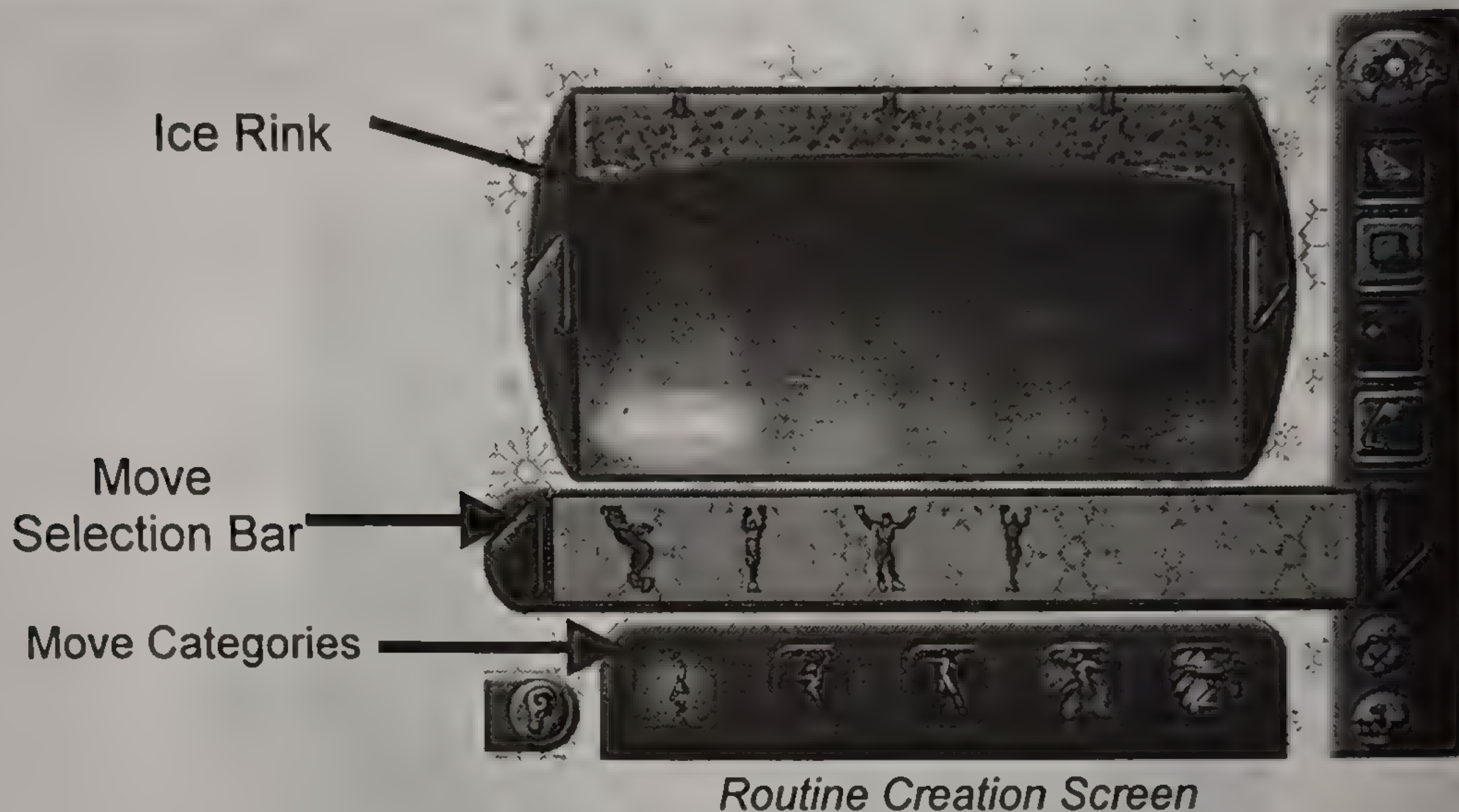
\*\*\*\*\*  
Selecting Settings will take you to the Settings Selection Screen where you will be able to select the background for Kristi's routine. Click on any of the three postcards to select the scenery background for your new routine. The background will appear to the right of the postcards in an enlarged display area. Once you have selected your setting, click on the Menu button in the upper right hand corner of the screen.



*Settings Selection Screen*

# Designing a Routine – Moves

\*\*\*\*\*  
Selecting Moves will take you to the Routine Creation Screen where you will be able to create a routine for Kristi to perform. Each of her moves can be previewed and you can play the finished performance from this screen as well.



The majority of the screen displays an Ice Rink where you place your individual moves. Just under the Ice Rink is the Move Selection Bar, showing the available moves from the selected category. Below the selection bar along the bottom of the screen are the five Move Categories.

# Designing a Routine – Move Categories

\*\*\*\*\*

There are five Move Categories in Kristi Yamaguchi Fantasy Ice Skating. Each category has specific moves that Kristi can perform.

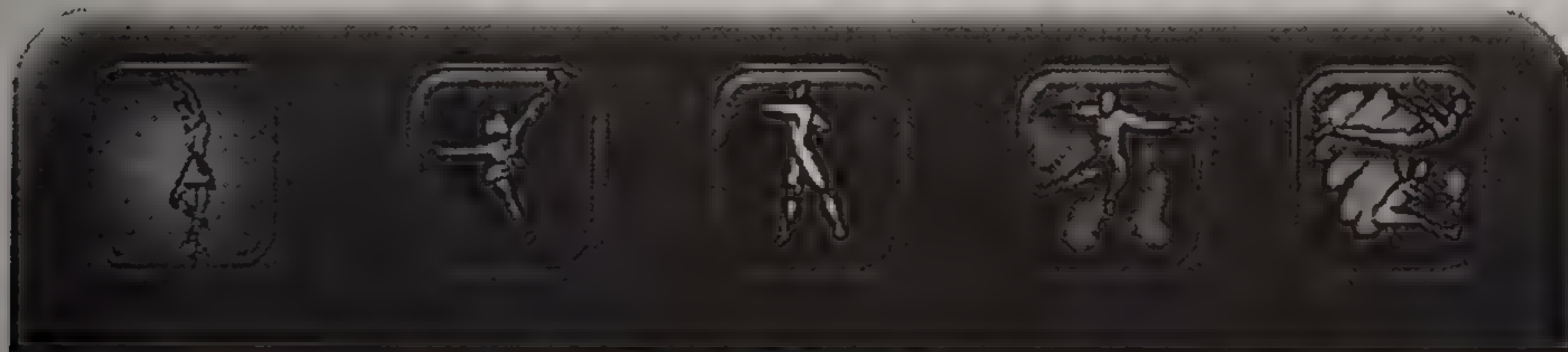
Poses

Jumps

Spins

Connecting

Combination



*Move Categories*

Poses are the introductory and ending moves. Kristi has two introductory poses and two ending poses. There are eight Jumps, six Spins, ten Connecting and five Combination moves that you can have Kristi perform in her routine.

Use the introductory poses to start Kristi's performance and the Connecting moves to tie the Jumps, Spins and Combination moves together into one great routine!

# Designing a Routine – Moves

\*\*\*\*\*  
On the right of the Routine Creation Screen are the buttons used to play, preview, save and clear your routine.

This is the **Play Routine Button**. This will play all of the moves in your routine in the setting and with the music you have chosen in the Music and Settings Screen.

This is the **Preview Button**. You can see Kristi perform the selected move using this button. Once you select this option you can play and rewind the move using the arrow buttons.

This is the **Save Button**. You must name the routine the first time you save it. Click on the Disk Button to save the routine or the Crossed Out Disk Button to exit.

This is the **Clear Button**. This will clear all of the moves in the currently displayed routine.

To preview a move either click on a move in your routine or select a new move and then click on the **Preview Button**. The preview screen will then display the selected move in the viewfinder. You can manipulate the preview after it plays through the move by either clicking on the **Rewind Button**, the **Frame Advance/Retreat** buttons, **Fast Forward Button**, and/or **Play Button**. Select the red **Close Button** just under the Play Buttons to exit the preview screen.



# Designing a Routine – Creating a Performance

\*\*\*\*\*

Once you select a category from the Move Categories a spotlight will appear on the ice rink. Now click on any move in the Move Selection Bar above and that will be the first move of your new routine.



*Move Selection Bar*

Start your performance with one of Kristi's introductory poses. After that move has been placed, the spotlight on the Ice Rink will move to the next available space for the next selected move. A total of twelve moves can be visible on the ice rink at a time. Once the ice rink has been filled with moves, a new blank ice rink will appear. On either side of the ice rink and Move Selection Bar are Scroll Arrows, which will be highlighted when you are able to see more moves than are currently visible.

Use the mouse and right click on any move in the Move Selection Bar for a description of that move.

# Designing a Routine – Creating a Performance

\*\*\*\*\*

If you wish to erase a move from the routine, click on the move you wish to erase and then click on the Cut Button. If you wish to insert a new move, click on the area in the Ice Rink in which you want to insert and then click on the Insert Button and the desired move. The Cut and Insert buttons are on the lower right hand side of the screen.



This is the **Cut Button**. Click on this if you wish to remove a move from the routine.

This is the **Insert Button**. Click on this if you want to insert a move into the routine.

Once you have finished designing your routine click on the **Play Routine Button** to see the complete performance! If you wish to skip through a particular move during the performance just hit the **Esc** (Escape) key on your keyboard.

## Design Tips

- Start your routine with one of the introductory poses and end your routine with a final bow pose.
- Use the Connecting Moves between Jumps, Spins and Combination moves to tie the routine together.
- If Kristi ends a move skating forward the next move in her routine should begin with her skating forward as well. This gives the routine a fluid and dramatic feeling.

# Troubleshooting

\*\*\*\*\*

This product utilizes DirectX libraries. Upon installation Kristi Yamaguchi Fantasy Ice Skating will attempt to install DirectX for you.

Any "Initialization" errors encountered are usually due to older, non-DirectX compatible video or sound cards or drivers - even if you feel your computer is *new*. You must upgrade your card's drivers. Most manufacturers have Internet Web sites where you can download these drivers free of charge.

\*Please contact your card's manufacturer and obtain the latest drivers.\*

## *Known Bugs & Workarounds*

The DirectX Sound library exhibits bugs when running under Windows NT. We recommend checking the Microsoft web page for an update to the Windows NT DirectX library. Sound is particularly unstable on Windows NT machines.

## *Video Problems?*

If you notice a lot of screen flicker or a slow refresh when playing the game, you might need to adjust a setting or two in the Display section of your Control Panel. If there is an option called "Page flip during vertical blank", "Page flip during vertical retrace", or something similar; you should turn this option ON. This should eliminate the flickering problem you see on your screen. Or right-click on My Computer, select Properties, then Performance. Click Graphics, then reduce acceleration a few notches (or all the way) until the video problems go away.

## *Video Problems? (continued)*

If you notice that the playback of your routine or any other video sequence tends to slow down and/or stop momentarily, you can optimize your CD-Rom drive to perform smoother. Double click on the System icon inside the Control Panel folder. When the System Properties screen is displayed, click on the Performance tab in the top right corner. Then find the File System button in the lower left corner and click on it. When the File System Properties screen is displayed, click on the CD-Rom tab. Then set the Supplemental Cache Size to: **Large** and the Optimize Access Pattern for **No read-ahead**. Click on **OK**. Windows will tell you to Re-start your computer, click on **Yes**.

## **Technical Support**

\*\*\*\*\*

WizardWorks Technical Support is available to help you resolve any problems you may encounter that are not addressed in this user guide or the on-line help system.

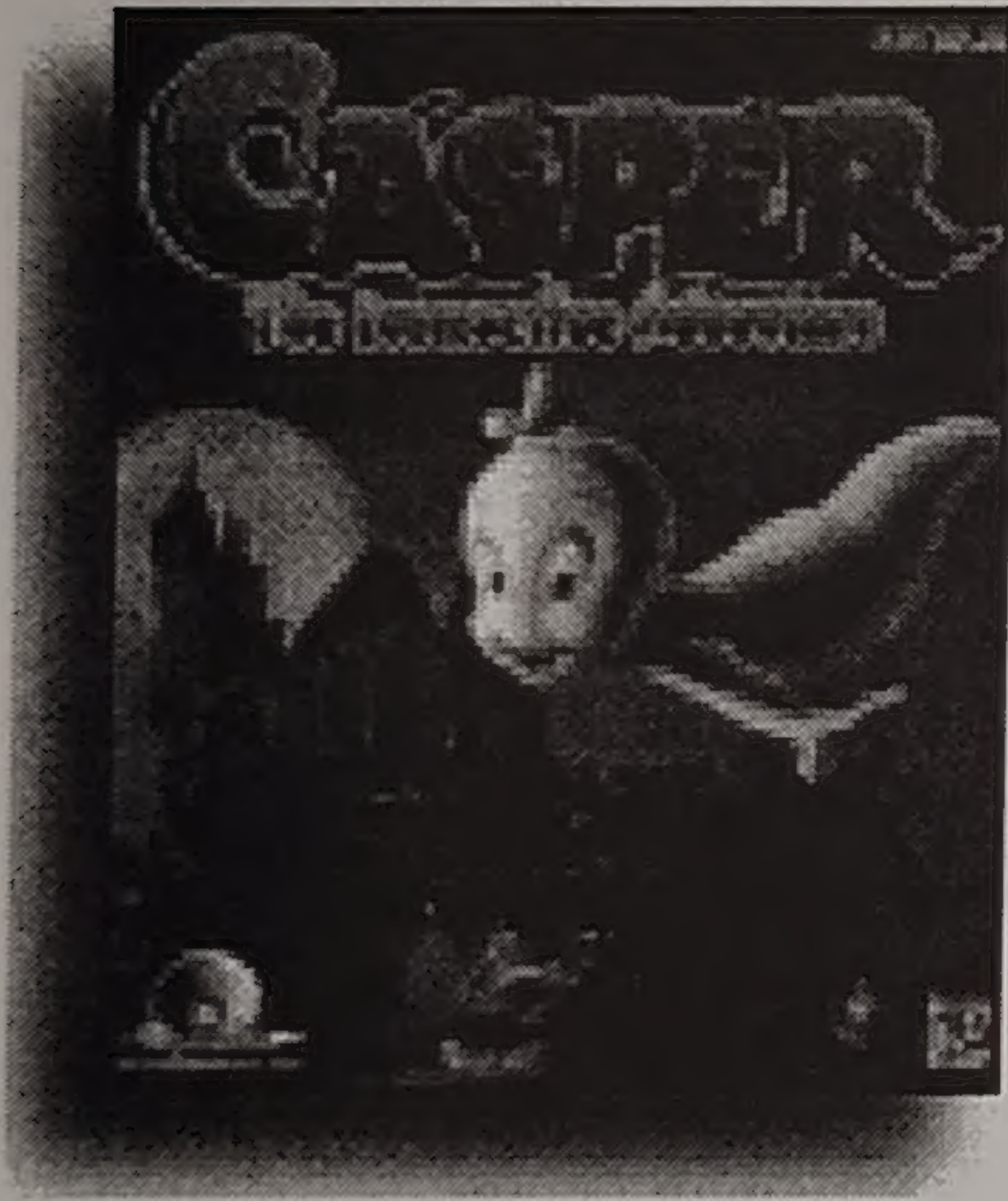
**Phone**                    612-559-5301

Technicians are available to answer your call Monday through Friday between 9 A.M. and 5 P.M. Central Time, holidays excluded.

**World Wide Web** <http://www.wizworks.com>

Visit WizardWorks on the web for all the latest information on Kristi Yamaguchi Fantasy Ice Skating and other great WizardWorks titles.

# ***Casper – The Interactive Adventure!***



## **EVERYONE'S FAVORITE GHOST COMES TO LIFE IN THIS INTERACTIVE ADVENTURE!**

- Based on the hit movie!
- Hair-raising animation and music from the Casper soundtrack!
- Multiple levels plus numerous characters and clues make each adventure exciting and new!
- The only interactive adventure of its kind!

**Visit your favorite retailer for a copy of Casper – The Interactive Adventure today, or call 1-800-229-2714.**

# LICENSE AGREEMENT AND LIMITED WARRANTY

PLEASE READ THIS LICENSE CAREFULLY BEFORE USING THE SOFTWARE. THIS DOCUMENT IS AN AGREEMENT BETWEEN YOU AND THE WIZARDWORKS GROUP INC (THE "COMPANY"). THE COMPANY IS WILLING TO LICENSE THE ENCLOSED SOFTWARE TO YOU ONLY ON THE CONDITION THAT YOU ACCEPT ALL THE TERMS CONTAINED IN THIS AGREEMENT. BY USING THE SOFTWARE YOU ARE AGREEING TO BE BOUND BY THE TERMS OF THIS LICENSE. IF YOU DO NOT AGREE TO THE TERMS OF THIS LICENSE, PROMPTLY RETURN THE UNUSED SOFTWARE (INCLUDING ALL PACKAGING AND YOUR ORIGINAL, DATED SALES RECEIPT) WITHIN 10 DAYS OF PURCHASE TO THE WIZARDWORKS GROUP INC, 2300 BERKSHIRE LANE, PLYMOUTH, MN 55441 AND YOUR MONEY WILL BE REFUNDED.

1. **Ownership And License**. This is a license agreement and NOT an agreement for sale. The software contained in this package (the "Software") is the property of the Company and/or its Licensors. You own the disk/CD on which the Software is recorded, but the Company and/or its Licensors retain title to the Software and related documentation. Your rights to use the Software are specified in this Agreement, and the Company and/or its Licensors retain all rights not expressly granted to you in this Agreement.
2. **Permitted Uses**. You are granted the following rights to the Software:
  - (a) ***Right to Install and Use***. You may install and use the Software on a single computer. If you wish to use the Software on more than one computer, please contact the Company for information concerning an upgraded license allowing use of the Software with additional computers.
  - (b) ***Right to Copy***. You may make and maintain one copy of the Software for backup and archival purposes, provided that the original and each copy of the Software are kept in your possession.
3. **Prohibited Uses**. The following uses of the Software are prohibited. If you wish to use the Software in a manner prohibited below, please contact the Company at the address, phone, or fax numbers listed above for information regarding a "Special Use License". Otherwise, you may NOT:
  - (a) Make or distribute copies of the Software or documentation, or any portion thereof, except as expressly provided in this Agreement.
  - (b) Use any backup or archival copy of the Software (or allow someone else to use such copy) for any purpose other than to replace the original copy in the event it is destroyed or becomes defective;
  - (c) Alter, decompile, or disassemble the Software, create derivative works based upon the Software, or make any attempt to bypass, unlock or disable any protective or initialization system on the Software;
  - (d) Rent, lease, sub-license, time-share, or transfer the Software or documentation, or your rights under this Agreement.
  - (e) Remove or obscure any copyright or trademark notice(s) on the Software or documentation;
  - (f) Upload or transmit the Software, or any portion thereof, to any electronic bulletin board, network, or other type of multi-use computer system regardless of purpose;
  - (g) Include the Software in any commercial products intended for manufacture, distribution, or sale; or
  - (h) Include the Software in any product containing immoral, scandalous, controversial, derogatory, obscene, or offensive works.
4. **Termination**. This license is effective upon the first use, installation, loading or copying of the Software. You may terminate this Agreement at any time by destruction and disposal of the Software and all related documentation. This license will terminate automatically without notice from the Company if you fail to comply with any provisions of this license. Upon termination, you shall destroy all copies of the Software and any accompanying documentation. All provisions of this Agreement as to warranties, limitation of liability, remedies or damages shall survive termination.
5. **Copyright Notice**. The Company and/or our Licensors hold valid copyright in the Software. Nothing in this Agreement constitutes a waiver of any rights under U.S. Copyright law or any other federal or state law.
6. **Miscellaneous**. This Agreement shall be governed by the laws of the United States of America and the State of Minnesota. If any provision, or any portion, of this Agreement is found to be unlawful, void, or for any reason unenforceable, it shall be severed from, and shall in no way affect the validity or enforceability of the remaining provisions of the Agreement.

**7. Limited Warranty and Disclaimer of Warranty.** For a period of 90 days from the date on which you purchased Software, the Company warrants that the media on which the Software is supplied will be free from defects in materials and workmanship under normal use. If the Software fails to conform to this warranty, you may, as your sole and exclusive remedy; obtain a replacement free of charge if you return the defective Software to us with a dated proof of purchase. The Company does not warrant that the Software or its operations or functions will meet your requirements, nor that the use thereof will be without interruption or error.

**EXCEPT FOR THE EXPRESS WARRANTY SET FORTH ABOVE, THE COMPANY DISCLAIMS ALL WARRANTIES, EXPRESS OR IMPLIED, INCLUDING AND WITHOUT LIMITATION, THE IMPLIED WARRANTIES OF MERCHANTABILITY AND FITNESS FOR A PARTICULAR PURPOSE. EXCEPT FOR THE EXPRESS WARRANTY SET FORTH ABOVE, THE COMPANY DOES NOT WARRANT, GUARANTEE OR MAKE ANY REPRESENTATION REGARDING THE USE OR THE RESULTS OF THE USE OF THE SOFTWARE IN TERMS OF ITS CORRECTNESS, ACCURACY, RELIABILITY, CURRENTNESS OR OTHERWISE.**

**IN NO EVENT SHALL THE COMPANY OR ITS EMPLOYEES OR LICENSORS BE LIABLE FOR ANY INCIDENTAL, INDIRECT, SPECIAL, OR CONSEQUENTIAL DAMAGES ARISING OUT OF OR IN CONNECTION WITH THE LICENSE GRANTED UNDER THIS AGREEMENT INCLUDING AND WITHOUT LIMITATION, LOSS OF USE, LOSS OF DATE, LOSS OF INCOME OR PROFIT, OR OTHER LOSS SUSTAINED AS A RESULT OF INJURY TO ANY PERSON, OR LOSS OF OR DAMAGE TO PROPERTY, OR CLAIMS OF THIRD PARTIES, EVEN IF THE COMPANY OR AN AUTHORIZED REPRESENTATIVE OF THE COMPANY HAS BEEN ADVISED OF THE POSSIBILITY OF SUCH DAMAGES. IN NO EVENT SHALL LIABILITY OF THE COMPANY FOR DAMAGES WITH RESPECT TO THE SOFTWARE EXCEED THE AMOUNTS ACTUALLY PAID BY YOU, IF ANY, FOR THE SOFTWARE.**

**SOME JURISDICTIONS DO NOT ALLOW THE LIMITATION OF IMPLIED WARRANTIES OR LIABILITY FOR INCIDENTAL, INDIRECT, SPECIAL OR CONSEQUENTIAL DAMAGES, SO THE ABOVE LIMITATIONS MAY NOT ALWAYS APPLY.**

#### **ACKNOWLEDGMENT**

**YOU ACKNOWLEDGE THAT YOU HAVE READ THIS AGREEMENT, UNDERSTAND IT AND AGREE TO BE BOUND BY ITS TERMS AND CONDITIONS. YOU ALSO AGREE THAT THIS AGREEMENT IS THE COMPLETE AND EXCLUSIVE STATEMENT OF THE AGREEMENT BETWEEN YOU AND THE COMPANY AND SUPERCEDES ALL PROPOSALS OR PRIOR ENDORSEMENTS, ORAL OR WRITTEN, AND ANY OTHER COMMUNICATIONS BETWEEN YOU AND THE COMPANY OR ANY REPRESENTATIVE OF THE COMPANY RELATING TO THE SUBJECT MATTER OF THIS AGREEMENT.**

## **Kristi Yamaguchi Fantasy Ice Skating**

**Copyright © 1997, 1998 Morning Star Multimedia Inc., All Rights Reserved**

**Uses Smacker Video Technology © Copyright 1998 RAD Game Tools, Inc.**

**Copyright © 1997 IDG Books Worldwide, Inc. Cover Photo By Heinz Kluetmeier**

**Published by:**

**The WizardWorks Group, Inc.**

**A GT Interactive Software Company**

**2300 Berkshire Lane North, Plymouth, MN 55441 USA**

**612-559-5301**

**e-mail: [support@wizworks.com](mailto:support@wizworks.com)**

**<http://www.wizworks.com>**

# Kristi

YAMAGUCHI

*Fantasy Ice Skating*



**WIZARD** *Works*

A GT INTERACTIVE COMPANY • PLYMOUTH, MN 55441

[www.wizworks.com](http://www.wizworks.com)