

FORBIDDEN CITY



Réunion
des Musées
Nationaux

CANAL+
MULTIMEDIA

Installation of the game	3
Introduction By Jean-Paul Desroches	5
Game modes • A virtual visit of the Forbidden City • The investigation • The documentary space • Options/Information/Technical specifications	6
The Forbidden City • Map • Places	10
The characters	12
Credits	15

PC configuration

- Windows™ 95 and 98
- Pentium 90
(166 recommended)
- 16 MB RAM
(32 MB recommended)
- 8x CD-ROM drive
(16x recommended)
- SVGA video card (65,000 colours) compatible Direct X™ 5.0
- 2 MB video memory
- Sound card 16 bits compatible Direct X™ 5.0
- Mouse compatible with Windows™ 95 or 98

Macintosh configuration

- Power Macintosh equipped with a Power PC processor, 90Mhz
(132 Mhz recommended)
- 24 MB RAM
(32 MB recommended)
- 4x CD-ROM drive
(8x recommended)
- Thousand colours screen, 640 x 480
- 7.1 system or above
(Soundmanager 3.0)

PC installation procedure

- If the "Autorun" mode is activated, the installation program starts automatically on insertion of the CD-Rom into the drive.
- Otherwise, click on the "Start" button, select "Run", and type (if your CD-ROM reader is called D) d:\setup.exe.
- Launch the Chine program from the Start /Program files/China: Forbidden City menu.
Minimum installation: 1 MB free on hard drive.
Maximum installation: 40 MB free on hard drive.

Macintosh installation procedure

Copy the "China Folder" from the CD-ROM on to your hard disk, then double click on the icon of the "China" application.
Note : a complete installation is made only when the application is launched for the first time. This process could take more than five minutes, depending on the system.

Note for PC and Macintosh

If you have the minimum system requirements only you might encounter an occasional jump in animated sequences and a repetition of the audio. This phenomenon is caused by an insufficient data transfer rate from the CD-ROM loading unsynchronised images and sound. In this case, we recommend the full installation.

Verification of Microsoft DirectX™5 Compatibility

- Check for compatibility with Microsoft DirectX™ 5: to check the compatibility of your system with DirectX™ 5, proceed as follows:
- Under Windows™ 95, open "my computer", double click on "Disc C" (with the name of your hard disk), open the folder "Program Files", open the folder "DirectX", then the folder "set up" and double click on the "Dxsetup.exe" program to run it.
- Check that the main display pilot lines (graphics card) and main sound peripheral sound card) each include the word "certified".
- Check that the version number begins with "4" and that the following value is equal or superior to "05".
- Examples:

"main display pilot	4.10.00.1555 certified"
"Main sound peripheral	4.38.00.0006 certified"
- Without these two conditions being fulfilled the functions of DirectX™ 5 will not be available or poorly supported.

If some of your pilots are not certified, you should update the pilots of those peripherals which do not carry this mention. These pilots are available directly from the manufacturers of your peripheral or from the manufacturer of your computer. Your equipment manufacturer must do what is required to ensure that your computer is compatible with the Microsoft DirectX 5 standard.

For any additional information and assistance:

www.cryo-interactive.com/chine.htm

www.canalplus-multimedia.fr

www.rmn.fr

Forbidden City

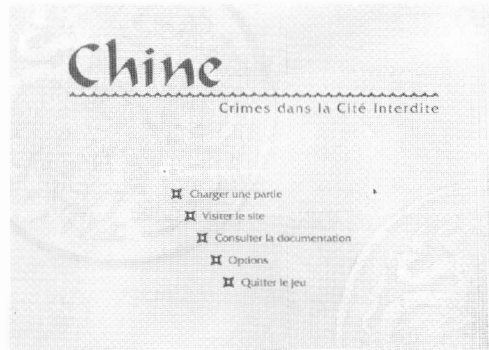
The Forbidden City, invented at the dawn of the 15th century by a demigod sovereign, emerged with a single leap in its finished form. The symbolic arrangement of an ideally administered state, it finds its roots in the succession of palaces that have preceded it since time immemorial.

A huge chess board, located in the heart of the capital, it represents the pivotal point of the empire stretching from the confines of the Himalayas to the shores of the Pacific. Hermetically enclosed, its gates open but rarely for the Son of Heaven, the master of the place and of destinies, who combines within him the secret and the sacred.

On June 21, 1775, in the 39th year of the reign of Qianlong, at dawn, in front of the staircase leading to the throne, the favorite of the Dowager Empress is found stabbed to death. The inquiry then begins in the astonishing maze of palaces. It is up to you to conduct it, you are the Superintendent of the Imperial House and the Emperor gives you this mission. You have to unravel a network of intrigues which will lead you discover a world unheard of. From surprise to new development, you will have to assimilate the rules of the game and familiarize yourself with this universe to emerge as the victor of this adventure.

Jean-Paul Desroches
Head Curator
of the National Museum
of Asian Arts-Guimet

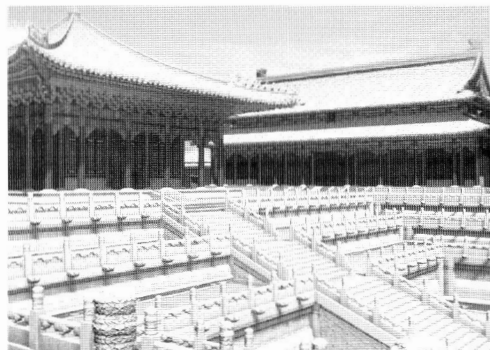
From the welcome screen, 3 consultation modes are proposed: the game, the visit of the site or the consultation of the documentary space.



A virtual visit of the Forbidden City

Set out to discover the wealth of the Forbidden City as you please.

During the visit, by clicking on the sensitive zones whose titles are displayed at the bottom of your screen, discover life in the Forbidden City in the 18th century in the reign of Emperor Qianlong.



You can start a new game or load a game already saved.



Go to

This action enables you to move from place to place.



See

Every detail counts: get close to the objects, they will be precious aids.



Act on, take

Know how to observe what is happening around you. Search... and store the objects you find in your inventory bar.



Use

Use the objects that you have in your inventory bar to pursue your inquiry. To call up or remove your inventory bar, click on the right hand button of your mouse.



Information In visit mode but also in game mode, gain access to the documentary base to discover even more about the Forbidden City.



Dialogue

Dialogue with the characters you meet. And remember that all the words are important.

Inventory bar

Whenever the cursor of your mouse passes over an object, its name is displayed to the left of the inventory bar. By clicking once on the object, you can use it in the scene that you see: opening a door by using a key, giving an order to a guard, by clicking with the object of the active zone.

See the clues

With the aid of this icon, consult the objects present in your inventory bar by positioning the clue on it. You can thus read the confessions, the post-humorous letter, etc.



Report

Consult the report prepared by Anjing each time he crosses a major threshold in the progress of his inquiry. A useful checklist for your inquiry.



Compass

The Forbidden City is a maze in which it is easy to get lost.

To help you, by clicking on the compass icon, you have access to two maps of the Forbidden City.

The map at the top right allows you to have a general view of the City. By moving into it, you will see a dot appear, which symbolizes your position in the Forbidden City, and a rectangle. This rectangle defines the zone that the left hand map covers in detail. If you are looking for a place by clicking on the palace icon at the bottom right, you will see a list appear. Select a place, the rectangle will immediately position itself around the spot selected. Then it's up to you to explore...

The left hand map shows the details of the map of the Forbidden City. By passing your cursor over the main palaces you will be able to get to know their names, but you will also have access to the documentary base or be able to move to the place itself as soon as your cursor becomes a pointing finger. It is therefore a rapid means of moving from one place to another.



Escape

Allows you to return to the welcome screen from game mode or from the documentary space or else to the place where the game is taking place after a close up visualization of a clue.

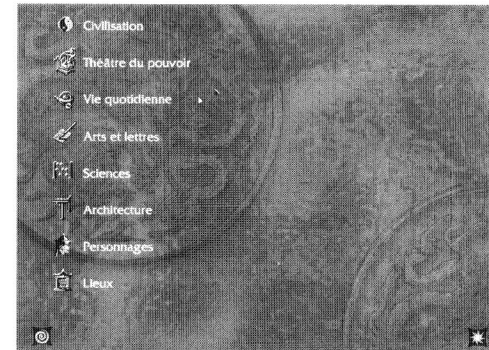
Saving

To save your game you have the choice between an automatic save (by default) or a manual save.

For the automatic save, when you start to play, you should choose an emblem. You have up to 12 possibilities, that means up to 12 different games.

If you prefer manual saving, select manual saving in the options menu, start a game then save your game whenever you feel it necessary; to resume the game, click on «resume the game».

Documentary space



From the welcome screen, select one of the eight themes proposed.



Within each theme, select the data sheets that interests you; when you consult a data sheet, the hypertext links will allow you to navigate in the documentary space as you please.

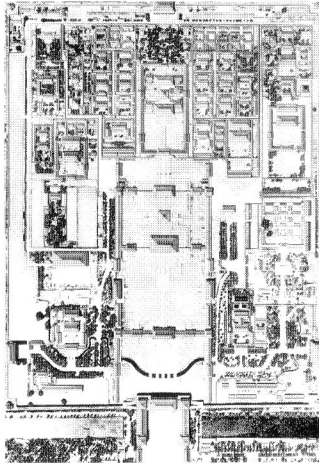
You can also consult all the data sheets of a chapter, one after the other, thanks to the arrows, or else make a search by data sheet in alphabetical order by clicking on the star icon.

To get back to the summary of the documentary space, click on the icon «escape».

Options / Information

- adjust the speed of the Omni 3D according to the power of your computer (very slow, slow, normal, fast, very fast)
- turn the music off or on
- turn off or on the display of subtitles
- turn off or on the automatic save

The map of the Forbidden City



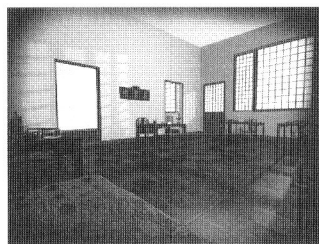
In 1775, the outer walls of the Forbidden City enclose 800 palaces, ceremonial rooms, sanctuaries and pavilions representing no less than 9,000 rooms.

The Manchurian Emperor Qianlong (1711-1799) reigns as supreme master surrounded by 9,000 inhabitants, concubines, eunuchs, servants and guards.

Nothing was left to chance in the construction of the Emperor's residence, everything obeys a system of symbols connected to philosophical Chinese concepts.

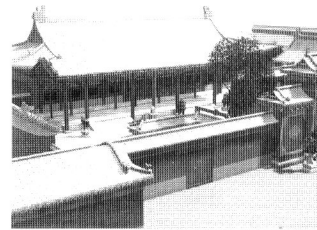
The Room of Powerful Fertility, the Palace of Supreme Harmony, the Palace of the Concubines, all these mysterious names that you will discover during your inquiry... Welcome to the residence of the Son of Heaven.

The places



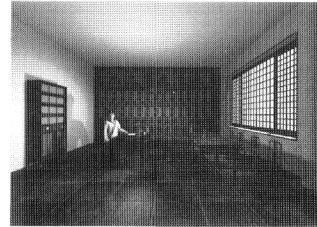
The Office of the Internal Petitions

Traffic inside the Forbidden City is strictly regulated. Whenever they wanted to move around within the private areas of the City, the Emperor's subjects had to request an authorization from the officials of the Office of the Internal Petitions.



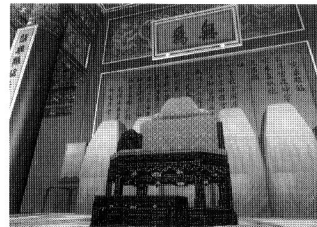
The Palace of the Nourishment of the Spirit

Residence of the emperor. The office of the head eunuch is located in the forecourt.



The Higher Study of the Princes

Classroom in which the Imperial princes pursue literary studies.



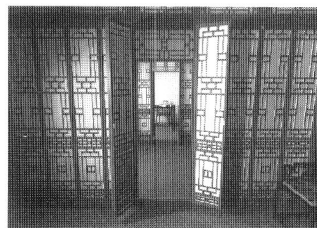
The Room of Powerful Fertility

The place where the Imperial seals are kept locked in precious coffers.



The Palace of Profound Purity (palace of the Concubines)

One of the dozen palaces where the Emperor's concubines lived. Many concubines could live in the same palace.



The Imperial Household

Running of the imperial household in which the superintendents were installed to manage the City.

1775, the Forbidden City is living at a pace imposed by the Ming dynasty. In the course of your inquiry, you will be meeting various players in the residence of the Son of Heaven. Do not hesitate to dialogue with them, they could be of precious help to you.



Emperor Qianlong

4th Emperor of the Manchurian Qing dynasty
In his reign China lives a great period of prosperity. Yet the end of his reign sees the start of the decline of the Qing dynasty.



Superintendent of the Imperial House of Anjing

Young Manchurian aristocrat, Anjing at the age of 35 reaches one of the highest positions in the Qing imperial hierarchy.



Superintendent of the Imperial House Daming

A more long serving superintendent, Daming among other things is responsible for the stewardship and management of the Forbidden City.



Director of the Office of the Internal Petitions, Director Li

A learned official, Director Li was recruited after a competitive examination. He supervises, among other things, the very strictly controlled traffic inside the Forbidden City.



Prince Yong Song

Sixteenth Prince, he will perhaps be chosen one day by Qianlong to succeed him; but first he has to study seriously.



Imperial guards

Responsible for the safety of the Emperor, the imperial guards are recruited from the Manchurian military elite. They are present at all the strategic points of the Forbidden City.



Assistant Judge Yang Chenhe

Learned official, Yang Chenghe assists Director Li in the administration of the City.



Imperial Tutor Wei (Master Wei)

Master Wei is an eminent Chinese mandarin who each day dispenses eight hours of lessons to the Imperial Prince Yong. He teaches mainly the classical Confucian texts.



Great Councilor Yu

Selected from among the highest officials, the Great Councilor is one of the most powerful men in the Empire. Qianlong always listens with interest to the advice of Yu.



Dowager Empress

Mother of Qianlong, she lives almost as a recluse in the Palace of Compassionate Peace.



Shouxiu, Fourth Rank Concubine

Shouxiu is a young Manchurian girl having become fourth rank concubine since she gave a son to the Emperor. Will her son one day accede to the throne?
25 years old.



Hua Bao, Lady in waiting of the Fourth Concubine

Hua Bao is a young Chinese girl in the service of the fourth concubine. She has been living in the Forbidden City since the age of 13. Soon, she will be able to return to her family to get married.
25 years old.



Chief Eunuch

Their role: supervising the eunuchs. In your inquiry, you will meet the head servants Ma, Wen, Jin Cao, Wang and Lu.
Listen to their words, they are always well informed.



Eunuch

At the end of the 18th century, there are some two thousand eunuchs within the walls of the Forbidden City. They are responsible for various functions and are the only men entitled to serve the ladies of the City. During your inquiry, you will cross some ten eunuchs in various positions.

CREDITS

Réunion des Musées Nationaux, Paris
Gugong museum, Beijing
National museum of the Palace, Taipei, Taiwan
Museum of the Army, Paris

Odyssey, Hong Kong
Guangjiaojing, HK, 1982
Esperanto Publishing of China, Beijing
Jiangong chubanshe, Beijing
Guji Chubanshe
Explorer
Rapho
Hoa-Qui
M.Chiu

WARNING TO OWNERS OF WIDE SCREEN PROJECTION TV'S

Fixed or stationary images can do irreversible damage to the cathode tube of your TV by marking definitively with luminophores. This is the reasons we recommend that you avoid using video games repeatedly or for extended periods of time on wide screen projection TVs.

WARNING ON EPILEPSY

Read before a video game is used by you or your child.

Certain people may suffer from epileptic fits or lose consciousness after viewing certain types of blinking lights or light sources in our daily environment. These people are exposed to fits when the watch certain televised images or when they play certain video games. These phenomena may appear even if the subject has no such medical history or has never suffered from an epileptic fit beforehand.

If you or a member of your family has already suffered from symptoms linked to epilepsy (fit or loss of consciousness) in the presence of luminous stimulation, please consult your physician before use.

We recommend that parents be attentive to their children when playing video games. If you or your child show the following symptoms: dizziness, vision problems, contraction of the eyes or muscles, loss of consciousness, orientation problems, involuntary movements or convulsion, stop playing immediately and consult a physician.

Precautions to be taken in every case when using a video game.

Do not stay too close to the screen. Play at a good distance from the television screen and as far as allowed by the connection cable.

Use video games preferably on small size screens.

Avoid playing if you are tired or if you lack sleep.

Make sure that you are playing in a well-lighted room.

When playing, take a ten to fifteen minute break every hour.



CHEMIN-1



Réunion
des Musées
Nationaux

CANAL+ 
 **MULTIMEDIA**

Copyright © 1998 Réunion des Musées Nationaux, Canal+ Multimédia, Cryo Interactive Entertainment. All rights reserved.